



SAM Wears Limited

Non-Woven Medical Wears and Surgical Requisites.

concern of **PROMIXCO**
Company for Health Care



Healing Starts..

SAM Wears Limited

Non-Woven Medical and Surgical Requisites.



SAM Wears Limited

Non-Woven Medical and Surgical Requisites.

**..with
Quality
Supplies**





Mousumi Islam
Chairperson

Chairperson's Message

With a modest beginning in the trade and business in 2000, PROMIXCO has transformed itself into a conglomerate boasting 14 companies within its fold over time. These companies are now engaged in diverse areas of business, commerce, and industries. PROMIXCO has been consistently striving hard to become the market leader in hospital furniture, medical devices, pharmaceutical, agro-business, veterinary, fashion, furniture, engineering, and media industries. Indeed, in some of the areas, it acted as the pioneer and prime mover and is recognized as the leading brand. It excelled in quality, services, and commitment towards the stakeholders, and obtained and secured ISO, CE, and FDA certifications for its concerns. It tirelessly strived to equip a new breed of entrepreneurs in the import substitution medical equipment and devices sector. It played catalytic roles and worked with the government in recognizing and including medical device manufacturing in the National Industrial Policy 2022.

PROMIXCO is dedicated to delivering innovative and cutting-edge medical devices that revolutionize the healthcare industry. It exercises the best endeavor to improve patient outcomes and enhance the quality of life across the globe in general and Bangladesh in particular.

I express my immense gratitude and heartfelt indebtedness to all the employees, government, bankers, and all other stockholders who have consistently been my source of encouragement and power throughout the long journey of PROMIXCO in becoming a trusted Group of Companies.

BOARD OF DIRECTORS



MOUSUMI ISLAM
Chairperson



SAMANTA ISLAM
Managing Director



SAM Wears Limited

Safe and hygienic wears

Sam Wears Limited, established in 2011, specializes in manufacturing non-woven medical wear and gear, including surgical gowns, shoe covers, head covers, and gauzes. Additionally, it produces the popular sanitary napkin brand, PINK. The company is proud to contribute significantly to the health sector with these essential hygienic products. By providing high-quality sanitary napkins, Sam Wears Limited aids millions of women of childbearing age, helping them protect against medical conditions and avoid embarrassment.

The company is dedicated to expanding its production capacity and reach across the country, aiming to promote a healthy lifestyle for all social strata. Sam Wears Limited's commitment to quality and hygiene underpins its mission to ensure that every individual has access to essential medical and sanitary products. The company's efforts are driven by the belief that small yet crucial products can have a substantial impact on public health and well-being. Through continuous growth and innovation, Sam Wears Limited aspires to make a lasting difference in the health and hygiene sector.

Medical Non-woven Protective Apparel

- Surgical Face Mask
- Disposable Head Cover
- Shoe cover
- Disposable Gown
- Isolation Gown
- Surgical Gown
- Reinforced Gown



Surgical Face Mask

- Low Resistance to Breath
- Protection against Dust, Flu, Infection, or Poisonous things.
- Reduce the risk of catching flu, and transmitting it to others.

Disposable Head Cover

- Light,soft,flexible and comfortable
- Without glass fibers
- Size and colors can be chosen as you want
- Factory direct sales with competitive price
- Perfect fitting
- Eco-Friendly/Dust prevention/Comfortable/Breathable



Shoe cover

- Suitable for environmental isolation and protection of basic bacteria and particulate matter
- Specifically designed for specific occasions and uses
- Widely used in daily work
- Limited waterproof and anti slip function
- Soft, light , Easy to wear, feel good, practical



Disposable Gown

- Full-cover provides safety and cleanliness
- Durable material for dependent protection
- Breathable material to prevent hot temperature buildup
- Varied colors for pleasant visual effect
- Can be used in Medical and Tattoo practices as well

Isolation Gown

- Protective gown used in Clean Laboratory, Medical clinic, food industry
- Non-sterile gowns are an important part of any infection control effort.
- Ideal for routine patient contact, contact isolation, decontamination, or general cleaning up tasks.
- Non Sterile
- Bands around neck and waist



Reinforced Gown

- Prevention of cross-contamination by reducing lint
- Resistant to liquids with its barrier feature.
- Resistant to moisture and bacterial penetration.
- Puncture, tear, and abrasion resistant.
- Free from toxic substances

Medical Non-woven Gauza and Cotton

- Gauze
- Absorbent Gauze
- Cotton
- Cotton roll
- Medical tape
- Bed Sheet & Pillowcase
- Laparotomy Sponges
- Knee Brace



Absorbent Gauze Gauze / Absorbent Gauze

- Made of 100% absorbent cotton;
- Color: bleached white or natural white;
- With or without X-ray detectable thread ;
- Feature: soft, absorbent, no-irritating to skin;
- Highly soft, absorbency, poison free strictly conforming to BP, EUP, USP;

Cotton / Cotton roll

- Made of 100% advanced cotton
- high absorbency and softness
- Different standards for your choice
- Convenient and comfortable to carry and use



Medical tape

- The product is comfortable and soft.
- PE foam tape is made of PE foam and medical pressure-sensitive adhesive, for supporting and protecting sprains and strains.
- Help to prevent injury to fragile joints during exercise or daily activities;
- It can also be used for anti abrasion and blistering of heels and toes.



Bed Sheet & Pillowcase

- Hospital grade, premium quality
- All-Weather Hospital Grade Blanket
- Pillowcase for soft and hygienic surface, Flat Sheet for added comfort and cleanliness
- Fitted Knitted Sheet guarantees snug fit over hospital mattresses
- Ideal size for hospital and homecare beds
- All-Weather Hospital Grade Blanket offers warmth and breathability

Laparotomy Sponges

- Are a blend of synthetic fibers, such as rayon and polyester
- With or without cotton loop, with or without X-ray detectable tape or thread.
- In 4ply, 6ply, 8ply, 12ply 16ply.
- Various specification and sizes are available
- Sterile or Non-sterile packing
- Used in operation room.



Knee Brace

- Features a unique thigh cuff that is flexible yet durable
- Enables optimal suspension, protection
- Comfort by moving with the muscles throughout the range of motion
- Aerospace grade aluminum frame is strong yet customizable.
- Also comes in full-frame design
- Posterior calf cuff reduces tibial pressure.
- Interchangeable condyle pads for increased comfort, stability, and protection.
- Numbered strapping system for intuitive application and removal.

Bandage and Tapes

- Elastic Crepe Bandage
- Pouch Arm Sling
- Conforming Gauze Bandage
- Cervical Collar
- Abdominal support
- Heating Pad
- Bandage PE

Elastic Crepe Bandage

- Latex free option for you choose, reduce the risk of latex allergy.
- High elastic compression
- Provides comfortable support



Conforming Gauze Bandage

- High stretch, lightweight bandage for holding dressings in place
- Cotton-nylon, fray resistant construction
- Individually wrapped



Pouch Arm Sling

- High quality skin friendly materials.
- Hook & loop closures for proper fitting.
- Breathable and moisture transporting weaving.

Cervical Collar

- Made from high density PU foam
- Reinforced with LDPE sheet enhance immobilization
- Rust proof, Poly propylene eyelets provide proper ventilation
- Ermophillic cotton stockinet with high GSM is trated to improve hypoallergenicity



Abdominal support

- Pleasant aesthetics, Sleek construction
- Single panel of elastic
- Light weight and thin construction.
- Porous webbing improves ventilation and comfort of the patient.
- Broad hook and loop tape panel offers better holding and sizing flexibility.
- Nylon reeves prevent rolling over of the belt
- Optimal compression, tones up abdominal muscles following surgery or pregnancy.

Heating Pad

- Full Body Relaxation
- Effectively Relieve Pain and Muscle Aches
- 6 Heating Levels and Overheating Protection
- Ultra-Soft Flannel and 150 cm Cable
- Machine Washable & Great Gift Idea



Bandage PE

- Strong adhesion and glue is latex free
- Breathable & comfortable protection
- Non-allergic for skin
- Elasticity provides more comfort
- Highly absorbent non-stick pad
- Waterproof
- No irritating odor, safer

Surgical Tapes

- Cotton Surgical Tape
- Silk-Like Surgical Tape
- Transparent PE Surgical Tape
- Transparent PU Surgical Tape
- Elastic Non-Woven Surgical Tape

Cotton Surgical Tape

- Transparent surgical tape with hypoallergenic adhesive for securing medical devices and fixation of dressings.
- Transparent, porous polyethylene carrier.
- Gentle and secure adhesion for sensitive skin, hypoallergenic.
- Permeable to air and moisture.
- Easy, straight, bi-directional tear.
- Water resistant. Radiotransparent.
- Ultrasonically Sealed Soft, Stretchy, Latex-Free

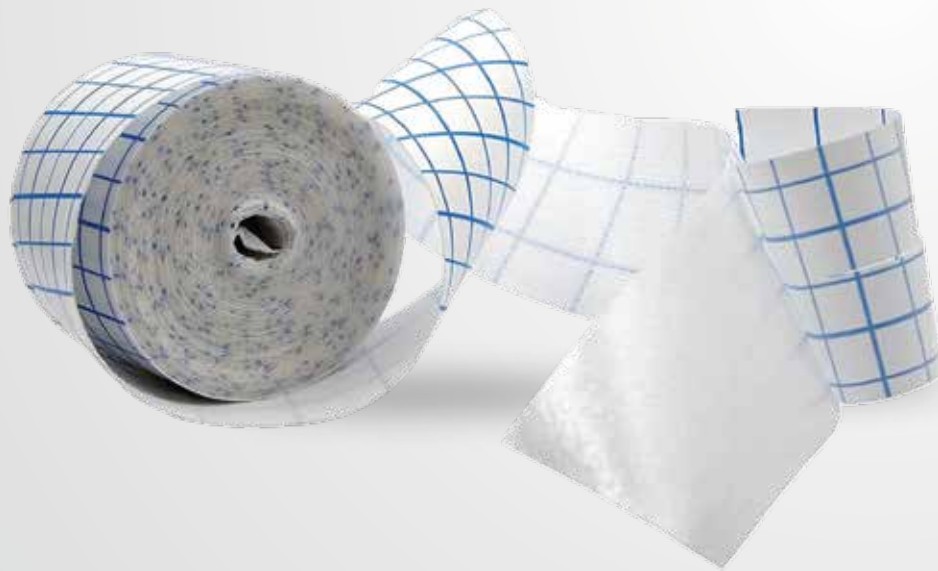


Silk-Like Surgical Tape

- Hypoallergenic adhesive on a porous tape.
- Non stretch and strong.
- Feathered edges to make it easy to tear by hand. Allows skin to breathe.

Transparent PE & PU Surgical Tape

- Easy-to-tear, making usage very convenient and comfortable
- Air-permeable, hypoallergenic



Elastic Non-Woven Surgical Tape

- Home and Professional Use
- Soft and Flexible
- Convenient and Easy use
- Reliable and skin friendly

Super Elastic Bandage

- Made of cotton and gipelast
- Approximately 200% stretch
- Supportive in sport activities
- Air permeable
- Nondeformable
- Store in cool dry place.



Ideal Bandage

- Composition: cotton and polyamide
- Length: approximately 4.5 m in maximum extension
- Elongation: about 50%



Universal Bandage

- C45% Polyester, 42% Cotton, 13% Viscose
- Elasticity approx. 80%
- Does not wear out
- Durable up to 60 °C
- Washable up to 60 °C and sterilisable (steam A 134 °C)

Cohesive Bandage

- Self adherent
- Easy Tear
- Flexible
- Non woven fibre
- Latex



Elastic Adhesive Bandage

- High twist, elastic fabric with rubber-based adhesive
- Easy Tear
- Flexible and comfortable to use
- Ideal for pressure dressing and wound protection
- Suitable for both human and animal use
- Porous construction for better breathability

Eye Pads

- Self-Adhesive Eye Pad
- Non-Woven Absorbent Compress
- Pediatric Self-Adhesive Eye Pad
- Gauzes and Sponges

Self-Adhesive Eye Pad

- Breathable hypoallergenic Flexible and comfortable to use
- ensures maximum comfort, allows skin to breathe
- Good use experience
- orrective Vision Training

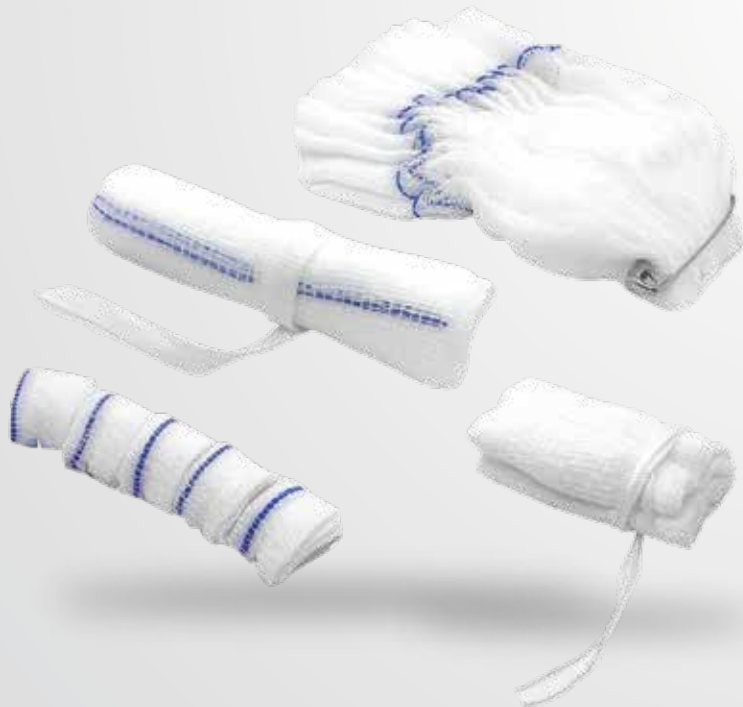


Non-Woven Absorbent Compress

- High absorbency and soft touch
- EO Sterilization / Non-Sterile
- Hypoallergenic, Air permeable
- X-ray permeable
- Offered in different sizes

Pediatric Self-Adhesive Eye Pad

- Long term powerful adhesion
- Hypoallergenic
- Non-adherent
- Air permeable, allows skin to breath
- X-Ray permeable



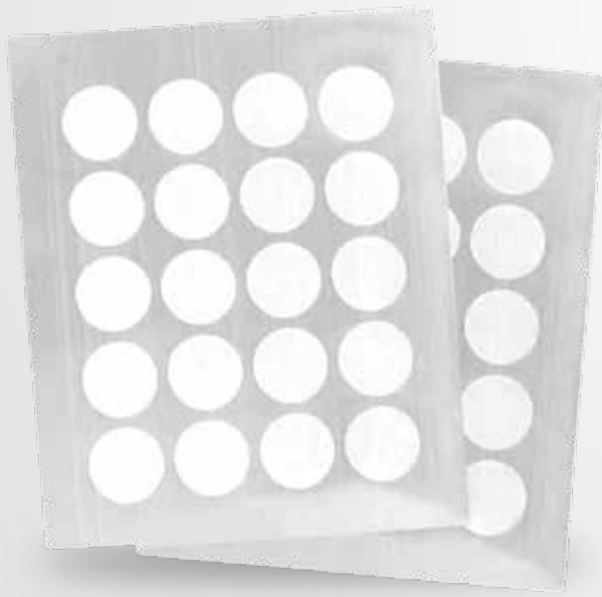
Gauzes and Sponges

- Made from 100% USP cotton gauze with X-ray.
- Strung according to customers specifications.
- string or tape options available.
- X-ray permeable
- All sponges are Latex Free.

- Mixed First Aid Plaster
- Acne Plaster
- Economic First Aid Plaster
- Blue Detectable First Aid Plaster

Mixed First Aid Plaster

- Prevent ingress of bacteria to the wounded skin surface.
- Helps for the healing of the wound by its air-permeability.
- Prevents ingress of bacteria by protecting the wounded area against water, dust and dirt.
- Suitable for daily use.

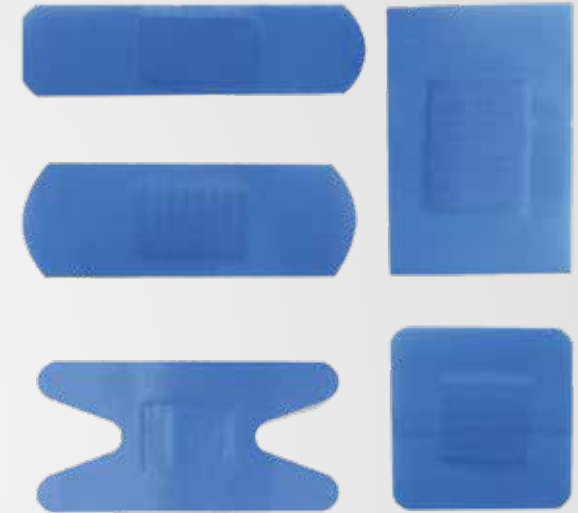


Acne Plaster

- Long term powerful adhesion
- Hypoallergenic
- Suitable for all skin types
- Water resistant and dirt repellent
- Convenient, easy to apply and remove
- Air and moisture permeable

Economic First Aid Plaster

- Long term powerful adhesion
- Hypoallergenic
- Water resistant
- Air permeable
- The adhesive does not leave waste
- Individually packed
- It is made of skin color polyethylene



Com Removal Plaster

- The plaster adhesive holds pad in position
- Salicylic Acid aids corn removal
- Foam ring provides excellent comfort
- Single use



Blue Detectable First Aid Plaster

- High quality
- Allergy tested
- Convenient and easy to use

Sutures and Alcohol Pad

- Absorbable Sutures
- Non-absorbable Sutures
- Cardiovascular Sutures
- Ophthalmic Sutures
- Microsurgery Sutures
- Dental Sutures
- Chromic
- Barbedfit
- Polyfit
- Silk
- Nylon
- Alcohol Prep Pad
- Alcohol Wipes

Absorbable Sutures

- Offer several advantages in dental practice
- Reducing patient inconvenience and discomfort
- Provide adequate wound support
- Absorbed by the body
- Promote a smoother healing process
- Resulting in better aesthetic outcomes and reduced scarring.



Non-absorbable Sutures

- Proven Strength with satisfactory flexibility and handling characteristics.
- Polyethylene sheath provides efficient insulation for reliable pacing.
- Electro-passive in tissue fluids.
- Break-off needle for improved connection to patient cable.
- High conductive flexible twisted steel wire.
- Wide range of curved needles with taper or trocar point.
- Colour code for the right identification.





Cardiovascular Sutures

- Designed to be biocompatible
- High tensile strength to withstand the dynamic pressure
- Minimal tissue inflammation and reaction
- Non-absorbable and Absorbable Options
- Engineered for precise handling and knot security, crucial for delicate cardiovascular surgeries

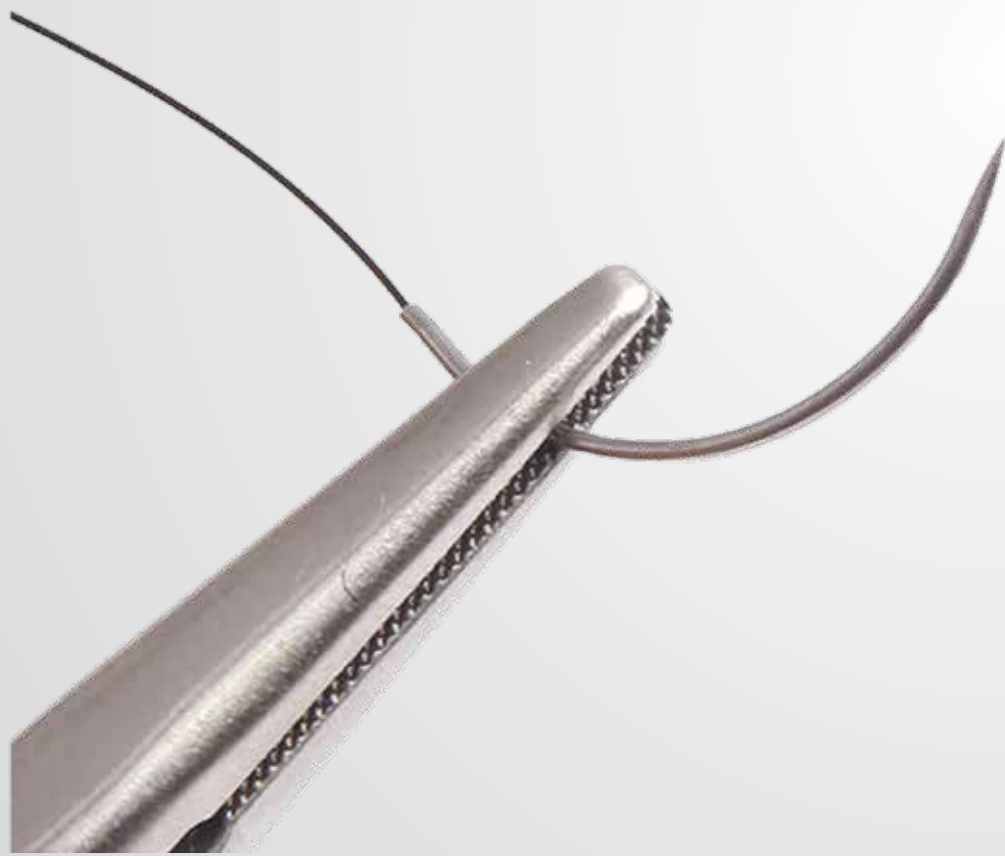
Ophthalmic Sutures

- Biocompatible for safe use in eye tissues.
- Ultra-fine and delicate to prevent tissue damage.
- Minimal tissue reaction to promote faster healing.
- Available in absorbable and non-absorbable options.
- High knot security for reliable wound closure.



Microsurgery Sutures

- Extremely fine for precision in delicate procedures.
- Biocompatible to minimize adverse reactions.
- High tensile strength for secure wound closure.
- Minimal tissue reaction to ensure quick healing.
- Available in absorbable and non-absorbable variants.



Dental Sutures

- Biocompatible for safe use in oral tissues.
- High tensile strength to withstand chewing forces.
- Minimal tissue reaction to promote faster healing.
- Available in absorbable and non-absorbable options.
- Easy handling for precise placement in the mouth.

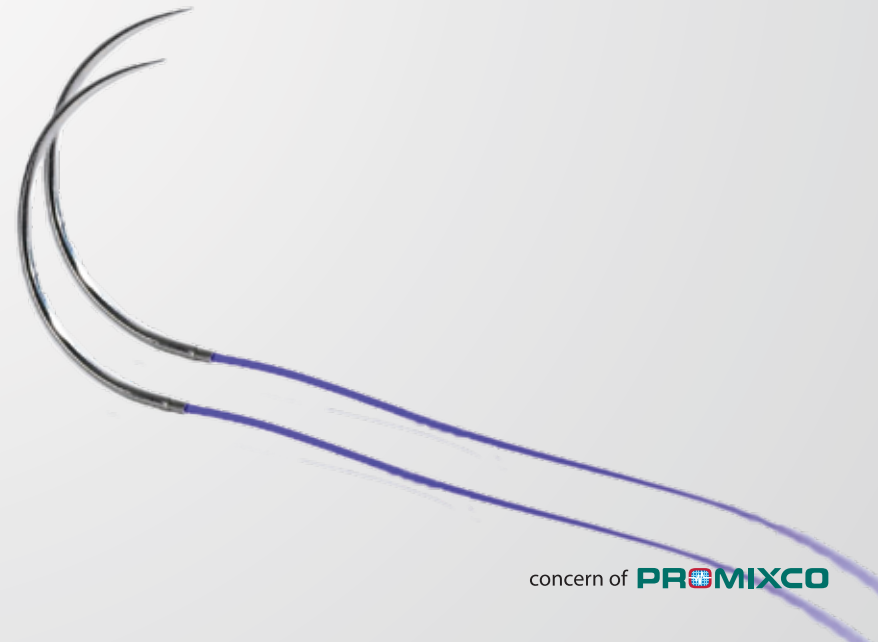


Chromic

- Absorbable suture made from treated catgut.
- Slower absorption rate for extended support.
- Biocompatible to minimize adverse reactions.
- Minimal tissue reaction to reduce inflammation.
- High knot security for reliable wound closure.

Barbedfit

- Designed for self-anchoring without knots.
- Biocompatible to minimize tissue reaction.
- Even tension distribution for secure wound closure.
- Absorbable and non-absorbable options available.
- Efficient handling for quicker suturing process.



Silk

- Non-absorbable and made from natural silk fibers.
- Smooth handling for precise suturing.
- High tensile strength for secure wound closure.
- Biocompatible with minimal tissue reaction.
- Reliable knot security for consistent performance.



Nylon

- Non-absorbable synthetic suture material.
- High tensile strength for strong wound closure.
- Smooth surface for easy handling and knot tying.
- Biocompatible and minimally reactive with tissues.
- Versatile, suitable for a wide range of procedures.

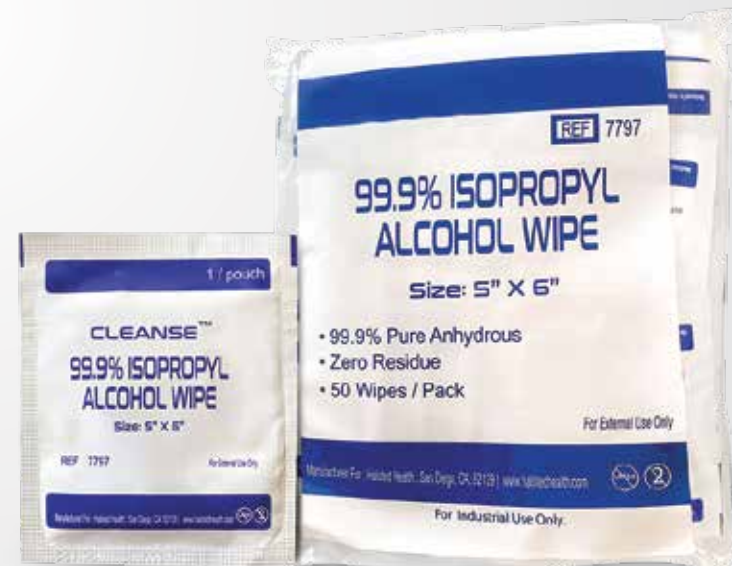


Alcohol Prep Pad

- Sterilizes and disinfects surfaces
- Cleanses surfaces for injections, lancets, & pen needles
- Perfect for first-aid kits, clinics, and home use
- Individually Sealed
- Disinfects & Cleanses Surfaces
- Preps Skin For Injection
- Gamma Sterilized

Alcohol Wipes

- Pre-moistened wipes saturated with isopropyl alcohol.
- Designed for disinfecting skin or surfaces.
- Convenient for quick and effective cleaning.
- Individually packaged for sterile application.
- Evaporates quickly without leaving residue.



Wound Care and Dressing Derange

- Closed Wound Suction Units
- High-Pressure Vacuum Bottles
- Redon Drain Tubes
- Under Water Seal Drainage
- Suction Set
- Elastic Non-Woven Wound Dressing (Hospital Pack)
- Transparent PU Wound Dressing (Hospital Pack)
- Absorbent Wound Pad
- I.V. Fixation Dressings
- Injection Plasters
- Drainage Tube
- Latex T Tube



Closed Wound Suction Units

- Devices used to drain and manage closed wounds.
- Facilitate removal of excess fluids and air.
- Help prevent fluid accumulation and infection.
- Designed for sterile and controlled suction.
- Promote healing by maintaining wound cleanliness.

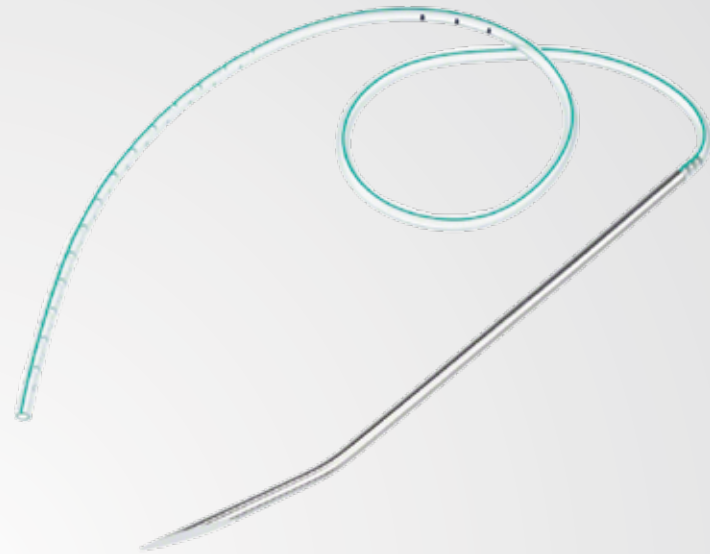
High-Pressure Vacuum Bottles

- Designed for high-pressure vacuum applications.
- Made from durable materials to withstand pressure.
- Ensure secure containment of vacuumed substances.
- Equipped with safety features for reliable operation.
- Used in various industries for efficient vacuum sealing.



Redon Drain Tube

- Medical-grade PVC, not made with DEHP or natural rubber latex
- Shore hardness 85
- Radio-opaque x-ray stripes
- Cross perforated for 13,5 cm on one end
- Three graduated markings with 1 cm distance
- Length of 50 cm



Under Water Seal Drainage

- Suitable for pleural drainage in conjunction with chest drainage catheters in cardio-thoracic procedures
- Polyseal adult is a double chamber compact unit having capacity of 2000 ml
- Clearly marked initial water level to ensure under water seal
- Clear easy to read graduations marked on bottle to determine the amount of collection
- Writing facility on the side of scale helps in monitoring of drain volume
- Kink resistant large bore tubing facilitates unrestricted flow
- Metallic hangers for easy attachment with bed and floor stand





Suction Set

- Soft flexible connector at both ends of the tube provide safe grip to the handle.
- Suitable for use with or without vent control facility.
- Vent port is closed with tight fit sleeve, which can be removed by small incision to shift to vent control system.
- Sterile, disposable, non-pyrogenic, individually packed.
- Box of 10/ Master Box of 40.
- compatible with variable drain connector for Ch. 6-18

Elastic Non-Woven Wound Dressing (Hospital Pack)

- Transparent polyurethane film for wound coverage.
- Provides a barrier against contaminants.
- Allows for visual wound inspection without removal.
- Breathable and comfortable for patient use.
- Hospital pack includes sterile dressing options.



Transparent PU Wound Dressing (Hospital Pack)

- Soft, comfortable, waterproof
- The transparent and high permeable PU film
- The extra-thin high permeable PU film
- The absorption pad is with good absorbency
- Humanized design, different sizes and styles available.



Absorbent Wound Pad

- Highly effective absorbent
- Ideal for heavily draining wounds
- Locks fluid away from skin
- Reduces infection risk
- Suitable for post surgical incisions
- Gentle material for wound care



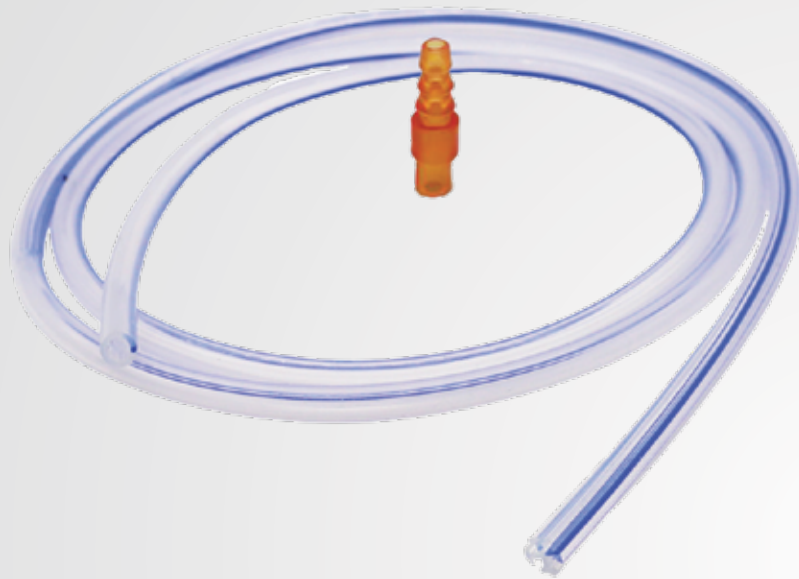
I.V. Fixation Dressings

- High permeability: avoid causing maceration to skin
- Preventing bacteria invasion
- Waterproof: Patient can take shower or bath freely
- Transparent: wound situation can be observed any time
- Soft and comfortable: suitable for different body
- Strong Viscosity: could hold on skin for 7 days
- Safe and convenient: the design of dressing makes it fast
- Various sizes and styles

Injection Plasters

- Adhesive plasters for covering injection sites.
- Designed to secure and protect the puncture area.
- Sterile and individually packaged for hygiene.
- Easy application and removal without residue.
- Promotes wound healing and prevents infection.





Drainage Tube

- Flexible tube used to remove fluids or air from body cavities.
- Various sizes and materials for different medical needs.
- Facilitates drainage to prevent fluid buildup.
- Sterile and designed for safe insertion and use.
- Vital in post-surgical and medical drainage procedures.

Latex T Tube

- T-shaped medical device made from latex.
- Used for drainage and irrigation in medical procedures.
- Facilitates fluid passage through multiple openings.
- Flexible and resilient for various clinical applications.
- Requires careful handling due to latex allergy concerns.



Linen

- Abdominal Sheet: White Drill
- Blanket (Coton)
- Blue Drilled Cloth
- Corrugated (Rubber sheet)
- Draw Sheet
- Long Cloth
- Matress (Foam)
- Operation Towel, White Drill
- Wollen Blanket



Abdominal Sheet: White Drill

- Surgical sheet made from white drill fabric.
- Designed for abdominal procedures and surgeries.
- Provides a sterile barrier over the surgical site.
- Absorbent and durable for effective fluid management.
- Ensures a clean and controlled operating environment.

Blanket (Cotton)

- Made from soft and breathable cotton fabric.
- Provides warmth and comfort to patients.
- Durable and machine-washable for repeated use.
- Hypoallergenic and gentle on sensitive skin.
- Available in various sizes to fit hospital beds.



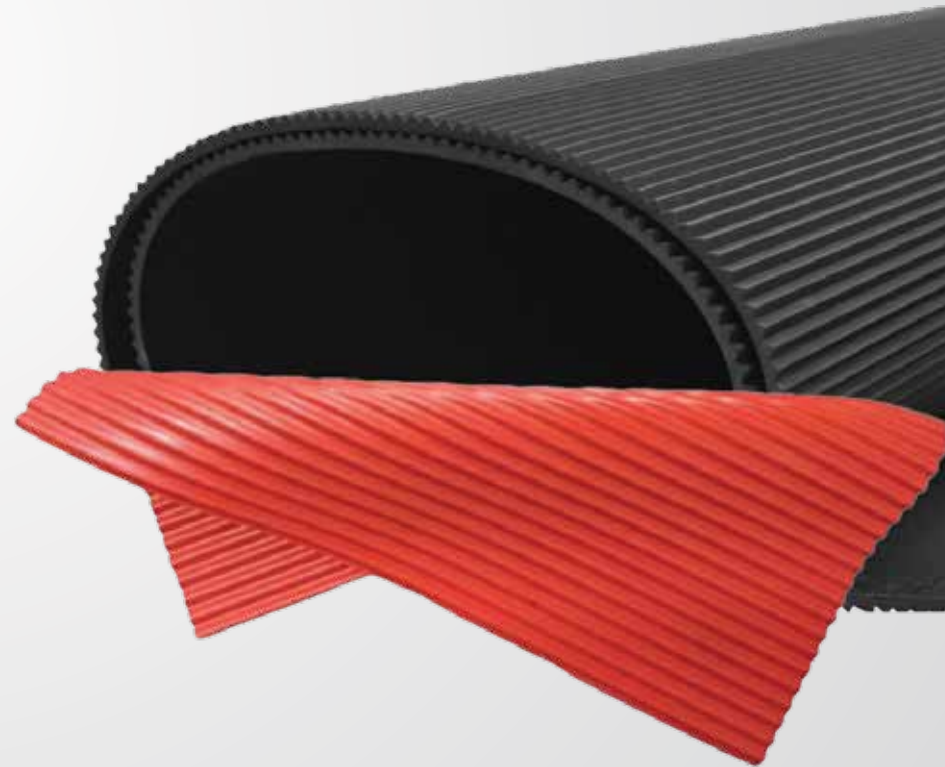


Blue Drilled Cloth

- Durable fabric with a drilled weave pattern.
- Typically used in medical and surgical settings.
- Provides strength and resilience for various applications.
- Often used for drapes, covers, and protective barriers.
- Easy to clean and maintain for repeated use.

Corrugated (Rubber sheet)

- Made from flexible and durable rubber material.
- Features a corrugated surface for enhanced grip.
- Used for protective and cushioning purposes.
- Resistant to water, chemicals, and abrasion.
- Versatile for various industrial and medical applications.





Draw Sheet

- A lightweight sheet placed over the main bedding.
- Used to assist in moving and positioning patients.
- Made from durable and absorbent fabric.
- Easily washable and reusable.
- Enhances patient comfort and hygiene.

Matress (Foam)

- Made from high-density foam for patient support.
- Provides comfort and pressure relief.
- Durable and resilient for long-term use.
- Hypoallergenic and resistant to dust mites.
- Easy to clean and maintain for hospital hygiene.





Operation Towel, White Drill

- Made from strong and absorbent white drill fabric.
- Designed for use in surgical operations.
- Provides a sterile barrier for surgical tools and surfaces.
- Durable and withstands repeated sterilization..

Wollen Blanket

- Made from natural wool fibers for warmth.
- Soft and breathable, ensuring patient comfort.
- Durable and long-lasting with proper care.
- Naturally hypoallergenic and resistant to dust mites.
- Provides excellent insulation in various temperatures.



Others

- Electrocardiograph Electrodes
- Injection Stopper
- Luer Lock
- Insulin Syringes
- Luer Lock Injection Site
- Surgical Dry Brush
- Transfer Spike
- Umbilical Cord Clamp
- Equipment Cover
- Sharp Collector
- Medical Face Protective Shield
- Kidney Dish Flat Reel

Electrocardiograph Electrodes

- Electrode Surface: Silver/silver chloride (Ag/AgCl)
- Adhesive: Hypoallergenic medical-grade adhesive
- Backing: Flexible and breathable foam or non-woven fabric
- Gel: Conductive gel for optimal signal transmission.



Injection Stopper

- Generally used for taking blood samples with the help of syringe and needle.
- To Stop I.V. Cannulae when not in use.
- Integrated valve within the stopper to allow drug administration into the Cannulae without unscrewing it.
- Universal 6% taper as per ISO 594, compatible with any standard product.
- Minimum dead space.
- Latex free option also available.
- Individually sterile & blister packed
- Packing : 250/2500pcs per inner/master carton
- Master carton dimension : 54×29×18 cm

Luer Lock

- Textured finger grips to minimize slippage
- Graduated (cc) increments
- Standard luer-lock style
- Use with any Vista Apex tips
- All sizes – 100/Box
- Intended for short-term storage of NaOCl



Insulin Syringes

- Non-toxic, Non-pyrogenic;
- EO gas sterilization;
- Nearly pain free injection with comfort;
- Low dead space syringe and more accurate dosage;
- Clearly printed graduation line and bold marking;
- Polybag package and Blister package are available.
- Disposable, non-sterile

Luer Lock Injection Site

- Used together with the arterial and venous cannula.
- The infusion of Heparin-Sodium can prevent the reflux of blood coagulation.
- Made from medical grade PVC, International luer connector, excellent on bio-compatibility.
- It was a tight-fitting adapter, has a good feature of seal, which leads to no leakage.
- Very smooth and easy to puncture, without any edges and corners.



Surgical Dry Brush

- Medline's scrub brushes help to achieve maximum cleaning with minimal skin irritation
- The flexible design fits comfortably in most hands
- Nail cleaner included
- Sterile



Transfer Spike

- Made of medical-grade plastic for safety.
- Typically 3-4 inches for standard use.
- Individually sterile packaged for hygiene.
- Fits standard IV bags and tubing.
- Facilitates aseptic transfer of fluids between containers.



- Made from durable, non-toxic plastic.
- Design: Simple, single-piece clamp for ease of use.
- Sterility: Individually sterile packaged.
- Safety: Provides secure closure to prevent bleeding.
- Application: Used for clamping the umbilical cord after

Equipment Cover

- Poly-backed for strength and fluid holdout
- Comfortable for patients and medical professionals
- Versatile and suitable for multiple applications
- Durable and absorbent for everyday use



Sharp Collector

- Easy Handling
- Compact and Portable
- Robust and Durable
- Secure Closure
- Puncture resistant but not puncture proof

Medical Face Protective Shield

- Comfortable and adjustable fit: Integrated foam cushioning and adjustable band for a snug, custom fit
- Anti-fog plastic shield that is easy to clean with water or disinfectant and reuse
- Full protection from moisture droplets and splashing liquids
- Fits over most glasses and goggles
- Ideal for general protection and woodworking, gardening,



Kidney Dish Flat Reel

- Easy Handling
- Compact and Portable
- Robust and Durable
- Secure Closure
- Puncture resistant but not puncture proof

OUR OFFICES AND BUSINESS AREAS IN DHAKA



- Uttara Zone
- Mirpur Zone
- Gulshan Zone
- Dhanmondi Zone
- Shahbag Zone
- Jatrabari Zone

OUR OFFICES AND BUSINESS AREAS IN BANGLADESH



-  Corporate Head Office
-  Corporate Sales Office
-  Industrial Park
-  Regional Sales Office



WE ARE HERE

Corporate Office: Forum, 187, 188/B Bir Uttam Mir Shawkat Sarak, Tejgaon, Dhaka 1215
 Corporate Sales: 34 Topkhana Road, Paltan, Dhaka 1000
 Factory: 103/1, Promixco Industrial Park Road, Mouchak, Kaliakair, Gazipur 1750, Bangladesh
 Hotline: +880 9644 223344, Tell: +8802223356469 | Email: info@promixcoltd.com



www.promixcogroup.com

OUR GLOBAL OFFICES AND BUSINESS AREAS



PROMIXCO GROUP

BRANDS

CSR

	
---	---



Head Quarter:

30 Roberts Lane #02-01, Singapore 218309

United States Office:

169-24 Hillside Ave, 2nd Floor, Jamaica,
NY 11432, United States.

Bangladesh Office:

187, 188/8 Tejgaon Link Road, Shanta Forum,
Gulshan, Dhaka 1215

Bangladesh Office:

34 Topkhana Road, Paltan, Motijheel Dhaka 1000



 www.samwearsbd.com